

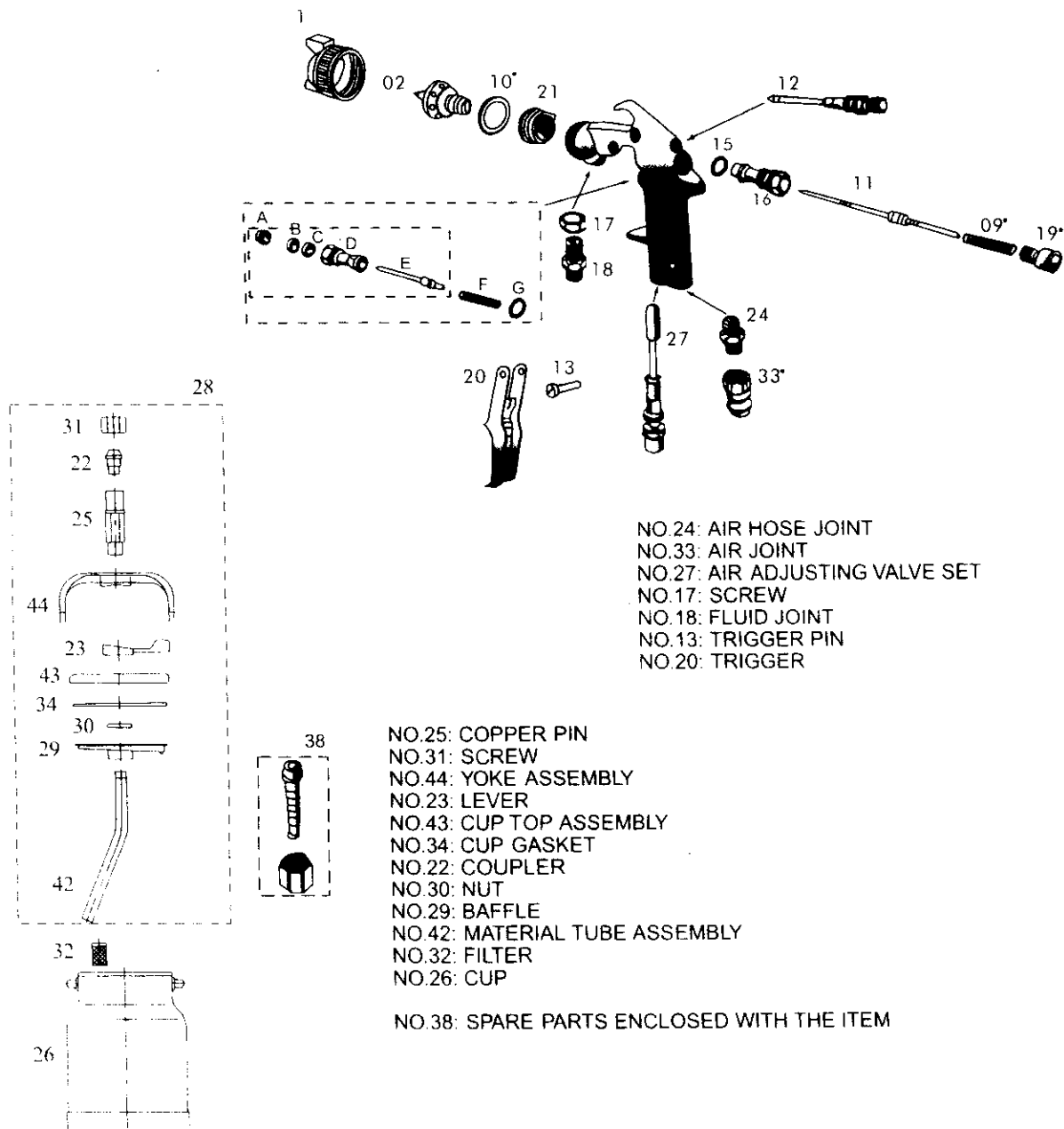
4008

NO.1: AIR CAP SET  
NO.2: NOZZLE  
NO.41: AIR VALVE SEAT SET

A. screw  
B. packing seat  
C. o ring  
D. valve body  
E. air valves  
F. air valve spring  
G. o ring

NO.10: COPPER GASKET  
NO.21: AIR ORIENTED RING  
NO.15: O RING  
NO.16: NEEDLE VALVE GUIDE  
NO.11: FLUID NEEDLE  
NO.09: NEEDLE VALVE SPRING  
NO.19: FLUID ADJUSTING SCREW  
NO.12: SPREAD ADJUSTING VALVE SET

#### 4001S SPARE PARTS LITS



NO.24: AIR HOSE JOINT  
NO.33: AIR JOINT  
NO.27: AIR ADJUSTING VALVE SET  
NO.17: SCREW  
NO.18: FLUID JOINT  
NO.13: TRIGGER PIN  
NO.20: TRIGGER

NO.25: COPPER PIN  
NO.31: SCREW  
NO.44: YOKE ASSEMBLY  
NO.23: LEVER  
NO.43: CUP TOP ASSEMBLY  
NO.34: CUP GASKET  
NO.22: COUPLER  
NO.30: NUT  
NO.29: BAFFLE  
NO.42: MATERIAL TUBE ASSEMBLY  
NO.32: FILTER  
NO.26: CUP

NO.38: SPARE PARTS ENCLOSED WITH THE ITEM